

# Metal Architecture

March 2015

MTC™

[www.metalarchitecture.com](http://www.metalarchitecture.com)

## 29th Annual Architect Survey

**Also Inside:**

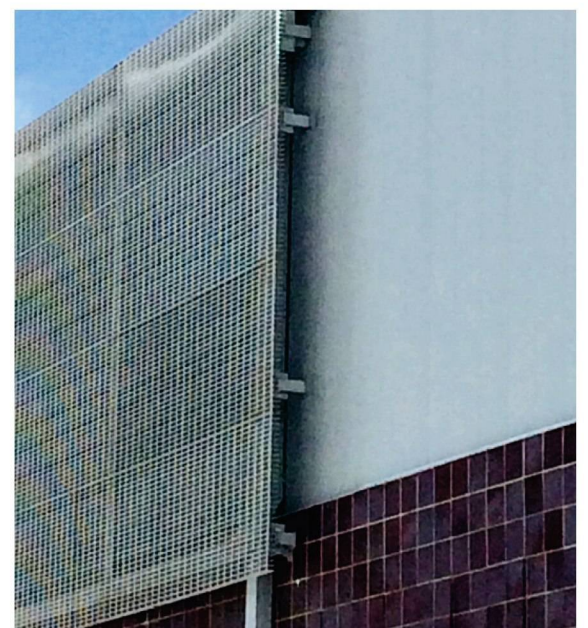
- + **Building Profile: Newport Beach Civic Center**
- + **Architect Profile: Edward A. Vance, FAIA, NCARB**
- + **Sports & Recreation Projects**

# Metal meets high school athletics facility

Memphis, Tenn.-based Varco Pruden Buildings' pre-fabricated metal building system was used to construct the **Health Education Center at Marion High School, Marion, Ill.** The 65,000-square-foot facility, completed in January 2015, was built in the northeast quadrant of the high school's campus and will connect to a new classroom wing surrounding an existing gymnasium. It contains three full-size basketball courts, a tennis court, batting cages and a running track. The center is the second phase of a six-phase project of additions and renovations at the high school.

Bossier City, La.-based McElroy Metal's Maxima roof system with 24-gauge, 18-inch-wide Maxima ADV Panel profile was installed on approximately 60,000 square feet of surface area. Approximately 17,000 square feet of McElroy Metal's 22-gauge, 10-foot, 3-inch flashing and flat sheet lengths and square cut metal panels were utilized.

Superior Metal Products LLC, Birmingham, Ala., supplied approximately 3,600 square feet of metal for a protective canopy cover. Ohio Gratings Inc., Canton, Ohio, and Frontier Steel Co. Inc., Pittsburgh, supplied 2-inch Mill LiTE 1-Bar Aluminum Swaged Grating with welded anchor blocks for a metal grating sunshade. Moon River Sign Co., St. Louis, the signage subcontractor for the project, created 2-inch-deep fabricated aluminum lettering with perimeter-lined white lighting and a 4-inch-deep fabricated aluminum letter M.



## CUSTOM COLUMN COVERS & BEAM WRAPS

*It's always a perfect wrap with ALUMAFAB!*

- STAINLESS STEEL
  - ALUMINUM
  - COMPOSITES
- 
- Round
  - Oval
  - Tapered
  - Elliptical
  - Spliced options
  - Caulked, reveal or butt joints
  - From 8" diameter
  - Up to 15' lengths

Timely turnaround, superb quality and attentive service.

Design assistance, technical resources always available.



Serving architects and contractors nationwide for 25 years, ALUMAFAB is your single source for column covers, beam wraps and more.

**AF ALUMAFAB METAL SALES, LLC**

More information just a scan away!

11901 Riverwood Dr. Burnsville, MN 55337 | (952) 895-5700 | Fax (952) 895-1500

**WWW.ALUMAFAB.COM**

**(800) 544-2488**

Circle #17 on reader service card.

## Affordable Metal Retrofit Solutions

Give us a call or send an email to let us know that you would like either our brand new CD or our 12 page brochure. [sales@roofhugger.com]

The CD includes an Introduction Video, Design Manuals, AutoCAD Construction Details, Testing & Approval Specifications and more.

The Brochure shows an array of Before and After Pictures, Sub-Framing Details, Energy Saving Solutions and more.



**800-771-1711**

**www.roofhugger.com**

**ROOF HUGGER®**



Circle #18 on reader service card.

# SPORTS AND RECREATION

PHOTOS: HURST-ROSCHIE ENGINEERS AND DESIGN ARCHITECTS INC.



The Health Education Center has locker rooms on the first floor, a 3,500-square-foot wellness center in the southwest corner and a mezzanine area above the locker rooms with a cardio room, weight room, multipurpose room and storage. The west side of the building opens to the football field. East of the fitness rooms are large, glass walls overlooking the courts and track on the lower level.

Design Architects Inc., Marion, was the architecture firm; Poettker Construction, Breese, Ill., was the general contractor; and Ross Construction, Marion, was the construction manager. Heartland Mechanical Contractors, Murphysboro, Ill., was the mechanical contractor; Southern Illinois Piping Co., Carbondale, Ill., was the plumbing contractor; and Burke Electric, Murphysboro, was the electrical contractor.

**Frontier Steel Co. Inc.,**  
www.samuel.com, Circle #47

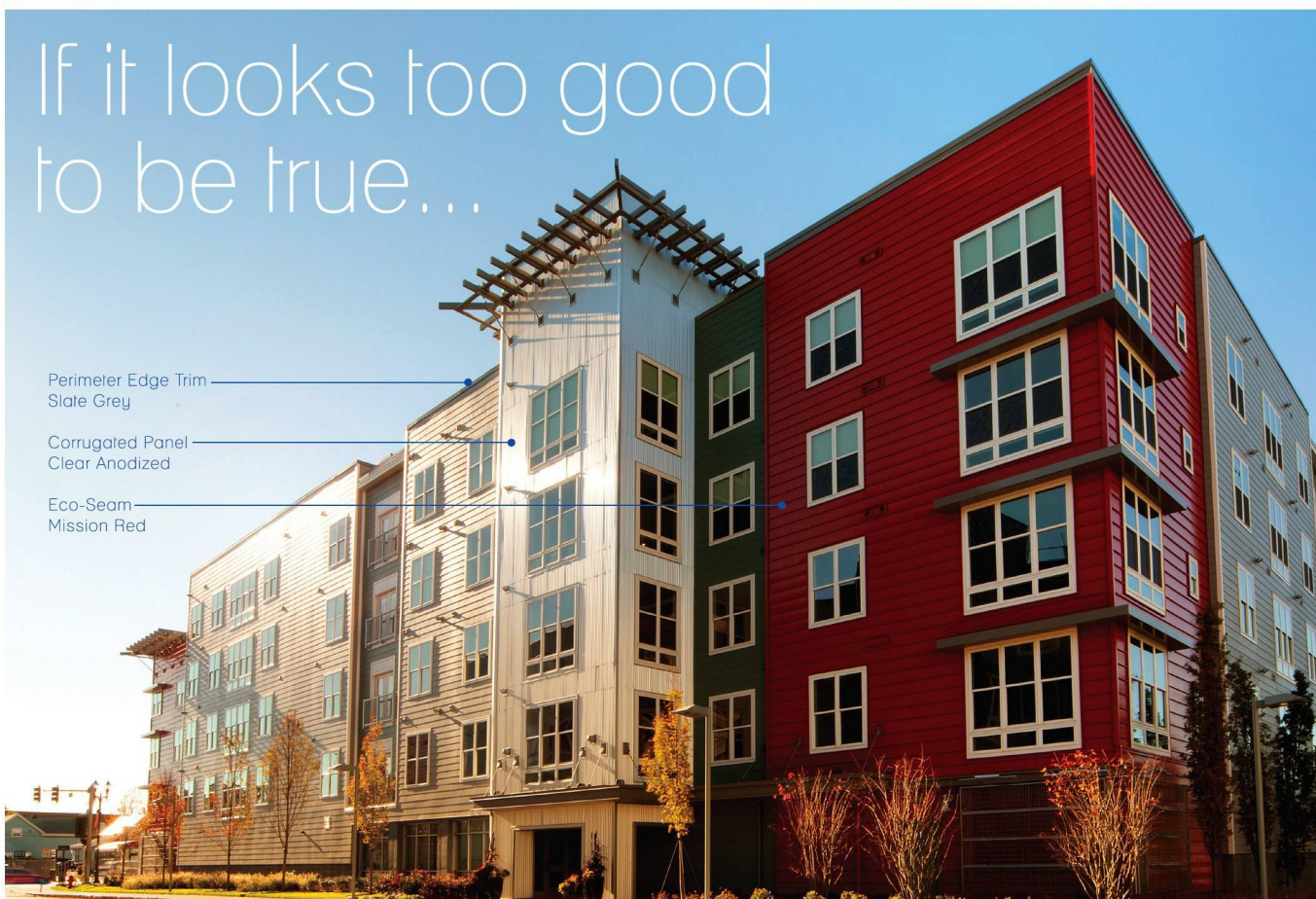
**McElroy Metal,**  
www.mcelroymetal.com, Circle #48

**Ohio Gratings Inc.,**  
www.ohiogratings.com, Circle #49

**Superior Metal Products LLC,**  
www.superiormetalproducts.com, Circle #50

**Varco Pruden Buildings,**  
www.vp.com, Circle #51

## If it looks too good to be true...



Perimeter Edge Trim  
Slate Grey

Corrugated Panel  
Clear Anodized

Eco-Seam  
Mission Red

The Batch Yard - Everett, MA  
Architect: Neshamkin French Architects; Charlestown, MA  
Installer: Plumb House, Inc.; Milford, MA  
Developer: Post Road Residential; Fairfield, CT



**ATAS International, Inc.**  
Sustainable Building Envelope Technology

## it's ATAS

Left: Eco-Seam™, Corrugated Panel, and Perimeter Edge Trim

Ideal for commercial or residential projects

Corrugated panels available in smooth or embossed texture

Choice of 31 standard colors with KYNAR 500® PVDF or HYLAR 5000® PVDF finish

Scan the code to visit our mobile website



Circle #19 on reader service card.