

Tennis Court Construction

Hillsboro Junior High School

Hillsboro CUSD No. 3

Hillsboro, Montgomery County, Illinois

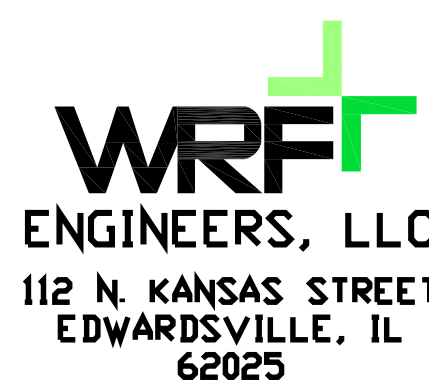
ARCHITECT / ENGINEER :



Hurst-Rosche, Inc.
PROFESSIONAL DESIGN NUMBER: 184-000298

1400 E. TREMONT STREET
HILLSBORO, IL
PH: 217.532.3959
www.hurst-rosche.com
EAST ST. LOUIS, IL
MARION, IL
ARNOLD, MO
SPRINGFIELD, IL
NASHVILLE, TN

CONSULTANT:



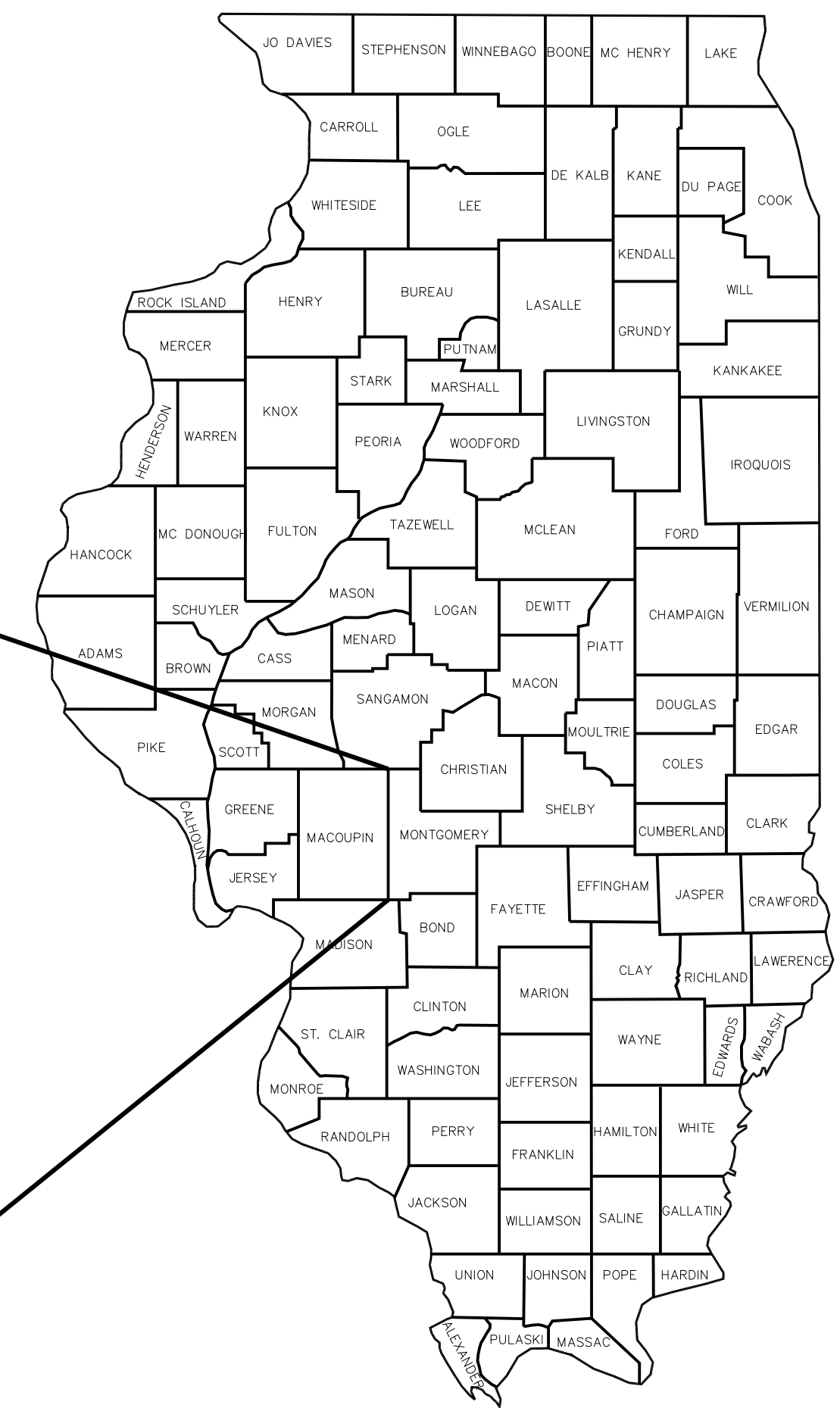
SHEET INDEX:

G-101	COVER SHEET
G-1	GENERAL NOTES
C-1	SITE PLAN
C-2	GRADING PLAN
C-3	STORMWATER POLLUTION PREVENTION PLAN
C-4	DETAILS
A-101	TENNIS COURT PLAN AND STRIPING LAYOUT
A-501	TENNIS COURT DETAILS
E-101	TENNIS COURT ELECTRICAL PLAN

SITE LOCATION
HILLSBORO JUNIOR HIGH
909 ROUNDTREE ST.
HILLSBORO, IL 62049



AREA LOCATION MAP



DATE: 04/07/2025

GENERAL NOTES

1. CONSTRUCTION SHALL BE IN ACCORDANCE WITH THE CURRENT EDITION OF THE IDOT STANDARD SPECIFICATIONS FOR ROAD AND BRIDGE CONSTRUCTION, ADOPTED APRIL 1, 2022 REFERRED TO HEREIN AS IDOT STANDARD SPECIFICATIONS.
 2. ALL ELEVATIONS SHOWN ARE REFERENCED TO THE CONTROL POINTS IDENTIFIED ON THIS SHEET AND SHOWN ON SUBSEQUENT SHEETS.
 3. ANY REFERENCE TO AN IDOT HIGHWAY STANDARD IN THESE PLANS SHALL BE INTERPRETED TO REFER TO THE EDITION INDICATED BY THE SUB-NUMBER LISTED ON THIS SHEET.
 4. EXCEPT AS NOTED IN THE PLANS, PAVEMENT GRADES SHOWN ARE AT THE TOP OF PAVEMENT SURFACES.
 5. RIGHT-OF-WAYS, PROPERTY LINES, AND TOPOGRAPHY SHOWN HEREON HAVE BEEN TAKEN FROM THE BEST AVAILABLE RECORDS AND SHALL BE VERIFIED BY THE CONTRACTOR TO HIS OWN SATISFACTION.
 6. ANY PROPERTY CORNERS OR OTHER PERMANENT SURVEY CONTROL MONUMENTS DISTURBED BY CONSTRUCTION SHALL BE VERIFIED AND/OR RESET AT THE CONCLUSION OF THE PROJECT CONSTRUCTION BY A PROFESSIONAL LAND SURVEYOR LICENSED IN THE STATE OF ILLINOIS AND EMPLOYED BY THE CONTRACTOR. WRITTEN VERIFICATION SHALL BE PROVIDED TO THE OWNER THROUGH THE CONSTRUCTION MANAGER, THAT ALL SAID EXISTING PROPERTY CORNERS AND/OR PERMANENT SURVEY CONTROL MONUMENTS SHOWN IN THE CONSTRUCTION PLANS HAVE BEEN PROTECTED AND/OR RESET.
 7. PERMITS, FEES AND LICENSES NECESSARY FOR THE PROCESSION OF WORK SHALL BE SECURED AND PAID FOR BY THE CONTRACTOR.
 8. THE CONTRACTOR IS RESPONSIBLE FOR CONSTRUCTION STAKING.
 9. MATERIAL TESTING IS THE RESPONSIBILITY OF THE CONTRACTOR, AND SHALL BE IN ACCORDANCE WITH THE IDOT STANDARD SPECIFICATIONS.
 10. QUANTITIES PROVIDED FOR CONTRACTORS INFORMATION. CONTRACTOR IS RESPONSIBLE FOR VERIFICATION OF QUANTITIES.
 11. SEE E-SHEETS FOR COORDINATION OF LIGHTING.
12. EXCAVATION AND BACKFILL:
- A. CONTRACTOR SHALL REMOVE AND DISPOSE OF ALL VEGETATION AFFECTING CONSTRUCTION WITHIN THE CONSTRUCTION LIMITS SHOWN ON THE PLANS IN ACCORDANCE WITH IDOT STANDARD SPECIFICATION SECTIONS 201 AND 440. ALL REMOVED VEGETATION SHALL BE DISPOSED OF WITHIN 7 DAYS OF REMOVAL.
 - B. EARTHWORK OPERATIONS SHALL BE PERFORMED IN ACCORDANCE WITH IDOT STANDARD SPECIFICATION SECTIONS 204 AND 205.
 - C. SUBGRADE PREPARATION SHALL BE IN ACCORDANCE WITH IDOT STANDARD SPECIFICATION SECTION 301. AREAS TO RECEIVE FILL SHALL BE SCARIFIED TO A DEPTH OF 6" AND COMPACTED TO MINIMUM 95% COMPACTION FOR ALL LIFTS BASED ON THE MAXIMUM DRY DENSITY IN ACCORDANCE WITH THE SPECIFICATIONS.
 - D. THE CONTRACTOR SHALL DISPOSE OF ALL UNSTABLE AND/OR UNSUITABLE MATERIALS RESULTING FROM CONSTRUCTION OF THIS PROJECT. SUCH MATERIALS SHALL BE DISPOSED OF BY THE CONTRACTOR AT HIS OWN EXPENSE OUTSIDE THE LIMITS OF OWNER PROPERTY IN SUCH A MANNER THAT PUBLIC OR PRIVATE PROPERTY WILL NOT BE DAMAGED OR ENDANGERED.
 - E. PROPOSED SPOT ELEVATIONS GENERALLY REFLECT ULTIMATE FINISH GRADE. FOR EARTH GRADES, THE FULL DEPTH OF PAVEMENT MUST BE SUBTRACTED FROM THE ELEVATIONS SHOWN. SEE PAVEMENT SECTION DETAILS AS APPLICABLE.
 - F. THE CONTRACTOR SHALL GRADE AND PREPARE ALL SUBGRADES TO WITHIN 0.1 FEET OF PLAN GRADE.
 - G. ESTIMATED CUT = 2942CY FILL = 2965CY (WITH SHRINKAGE)

13. ENVIRONMENTAL AND EROSION:

- A. THE CONTRACTOR SHALL BE THE OPERATOR OF THE NATIONAL POLLUTANT DISCHARGE ELIMINATION SYSTEM (NPDES) PERMIT THROUGH THE ILLINOIS ENVIRONMENTAL PROTECTION AGENCY. THE OWNER WILL BE THE SIGNATORY AND PAY THE NPDES PERMIT FEE. THE A/E WILL BE THE PREPARER OF THE NOTICE OF INTENT (NOI) INCLUDING COORDINATION WITH STATE HISTORICAL PRESERVATION AND ECOCAT AND DEVELOPMENT OF A SWPPP SHEET.
- B. CONTRACTOR SHALL PROVIDE EROSION AND SILTATION CONTROL, IN ACCORDANCE WITH SECTION 280 OF THE IDOT STANDARD SPECIFICATIONS, TO PREVENT DAMAGE OF OFFSITE PROPERTIES UNTIL VEGETATION IN DISTURBED AREAS HAS BEEN ESTABLISHED, AT WHICH TIME HE SHALL BE RESPONSIBLE FOR REMOVAL OF ALL TEMPORARY EROSION CONTROL AND REPAIR OF ANY ERODED AREAS.
- C. CONTRACTOR SHALL MULCH SLOPES 1:4 (V:H) AND STEEPER BY CONSTRUCTING EROSION CONTROL BLANKET IN ACCORDANCE WITH SECTION 251 OF THE IDOT STANDARD SPECIFICATIONS. THE EROSION CONTROL BLANKET SHALL BE EXCELSIOR BLANKET.
- D. DURING CONSTRUCTION, THE CONTRACTOR SHALL NOT CAUSE SEWAGE TO BE DISCHARGED ON THE GROUND, IN WATERWAYS OR INTO THE GROUND; NOR SHALL HE CAUSE BACKUP OF SEWAGE INTO BUILDINGS. SEWAGE SHALL BE DIVERTED BY PUMPING.
- E. ALL TEMPORARY AGGREGATE SHALL BE REMOVED, GRADED, SEEDED AND MULCHED AS NECESSARY AT THE COMPLETION OF THE CONTRACT.
- F. ALL DISTURBED AREAS SHALL BE SEEDED AND MULCHED IN ACCORDANCE WITH THE IDOT STANDARD SPECIFICATIONS.

14. MATERIALS AND INSTALLATION:

- A. AGGREGATE BASE COURSE TYPE B SHALL BE IN ACCORDANCE WITH IDOT STANDARD SPECIFICATION SECTION 351.
- B. CONCRETE FOR TENNIS COURTS SHALL BE IN ACCORDANCE WITH IDOT SPECIFICATION SECTION 420 W/REFERENCE TO SECTION 1020, CLASS SI
- C. SIDEWALK SHALL BE IN ACCORDANCE W/IDOT STANDARD SPECIFICATIONS, SECTION 424 W/REFERENCE TO SECTION 1020, CLASS SI
- D. PIPE CULVERTS SHALL BE IN ACCORDANCE WITH IDOT STANDARD SPECIFICATION 542, CLASS D, TYPE 1.
- E. CONTROLLED LOW-STRENGTH MATERIAL SHALL BE IN ACCORDANCE WITH IDOT STANDARD SPECIFICATION 593

15. GENERAL UTILITIES:

- A. ABANDONED UNDERGROUND UTILITIES THAT CONFLICT WITH CONSTRUCTION SHALL BE DISPOSED OF OUTSIDE THE LIMITS OF OWNER PROPERTY ACCORDING TO ARTICLE 202.03 OF THE IDOT STANDARD SPECIFICATIONS AND AS DIRECTED BY THE ENGINEER. THE WORK WILL NOT BE PAID FOR SEPARATELY BUT SHALL BE CONSIDERED INCIDENTAL TO THE CONTRACT.
- B. THE EXISTING UTILITY INFORMATION AND OBSTRUCTIONS SHOWN ARE FROM THE BEST AVAILABLE RECORDS AND SHALL BE VERIFIED BY THE CONTRACTOR TO HIS OWN SATISFACTION PRIOR TO AND DURING CONSTRUCTION. THE ENGINEER AND THE OWNER DO NOT WARRANT OR GUARANTEE THE COMPLETENESS OR THE CORRECTNESS OF THE INFORMATION GIVEN.
- C. NECESSARY PRECAUTIONS SHALL BE TAKEN BY THE CONTRACTOR TO PROTECT EXISTING UTILITIES AND ANY DAMAGE TO THEM DUE TO HIS NEGLIGENCE SHALL BE REPAIRED IMMEDIATELY AT THE CONTRACTOR'S EXPENSE.
- D. THE CONTRACTOR SHALL BE RESPONSIBLE FOR PROTECTING THE UTILITY PROPERTY FROM CONSTRUCTION OPERATIONS AS OUTLINED IN ARTICLE 107.31 OF THE IDOT STANDARD SPECIFICATIONS. THE J.U.L.I.E. NUMBER IS 800-892-0123. A MINIMUM OF FORTY-EIGHT HOURS ADVANCE NOTICE IS REQUIRED.
- E. FLOWLINE EL OF EX UTILITIES IS UNKNOWN. PLAN LOCATION APPROXIMATED FROM ORIGINAL CONSTRUCTION. CONTRACTOR TO POTHOLE NEAR WEST EDGE OF COURT TO VERIFY CLEARANCE FOR PROPOSED CONSTRUCTION OVER 4 SHOWN UTILITIES (2 STORM, 1 SANITARY, 1 SUBSURFACE DRAIN). CONTACT A/E IF UTILITY IS DETERMINED TO BE IN CONFLICT WITH PAVEMENT STRUCTURE. IF ALTERNATE 1 BARRIER WALL IS SELECTED, THE BARRIER WILL BE INSTALLED AROUND THE EX UTILITIES IF NEEDED.

IDOT STANDARDS
00001-08 STANDARD SYMBOLS, ABBREVIATIONS, AND PATTERNS
28001-07 TEMPORARY EROSION CONTROL SYSTEMS
542401-04 METAL FLARED END SECTIONS FOR PIPE CULVERTS

● BENCHMARKS				
	NORTHING	EASTING	ELEVATION	DESCRIPTION
1000	905660.84	2488328.40	591.13	HRE IP/CAP SET
1001	905948.20	2488363.72	591.96	HRE IP/CAP SET
1002	905926.40	2488653.23	582.17	HRE IP/CAP SET
1003	905600.68	2488625.00	585.35	HRE IP/CAP SET



Hurst-Rosche, Inc.
PROFESSIONAL DESIGN NUMBER: 164-000296

1400 E. TREMONT STREET
HILLSBORO, IL
PH: 217.532.3959
www.hurst-rosche.com
EAST ST. LOUIS, IL
MARION, IL
SPRINGFIELD, IL
ARNOLD, MO
NASHVILLE, TN



Justin L. Godwin

SIGNATURE 4/7/2025

DATE 11/30/2025

LICENSE EXPIRES

TENNIS COURT CONSTRUCTION
 HILLSBORO JUNIOR HIGH SCHOOL
 HILLSBORO CUSD No. 3
 HILLSBORO, MONTGOMERY COUNTY, ILLINOIS

MK.	DATE	DESCRIPTION

DATE: 4/7/2025
PROJECT NO: 150-0115
DESIGN: JG DRAWN: DH CHECK: JC

GENERAL NOTES

G-1



Hurst-Rosche, Inc.
PROFESSIONAL DESIGN NUMBER: 164-000296

1400 E. TREMONT STREET
HILLSBORO, IL
PH: 217.532.3959
www.hurst-rosche.com
EAST ST. LOUIS, IL
MARION, IL
SPRINGFIELD, IL
ARNOLD, MO
NASHVILLE, TN



Justin L. Godwin
SIGNATURE

4/7/2025
DATE

11/30/2025
LICENSE EXPIRES

TENNIS COURT CONSTRUCTION

HILLSBORO JUNIOR HIGH SCHOOL

HILLSBORO CUSD No. 3

HILLSBORO, MONTGOMERY COUNTY, ILLINOIS

MK. DATE DESCRIPTION

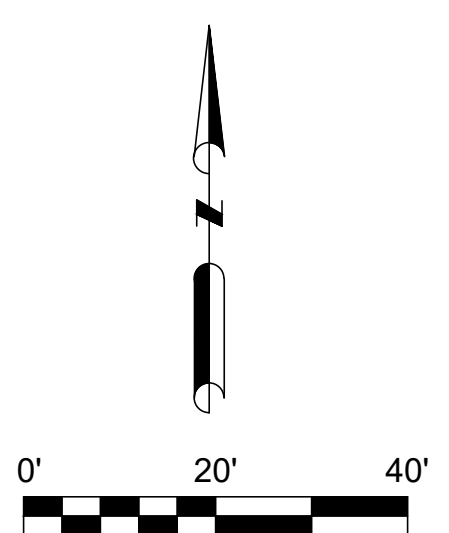
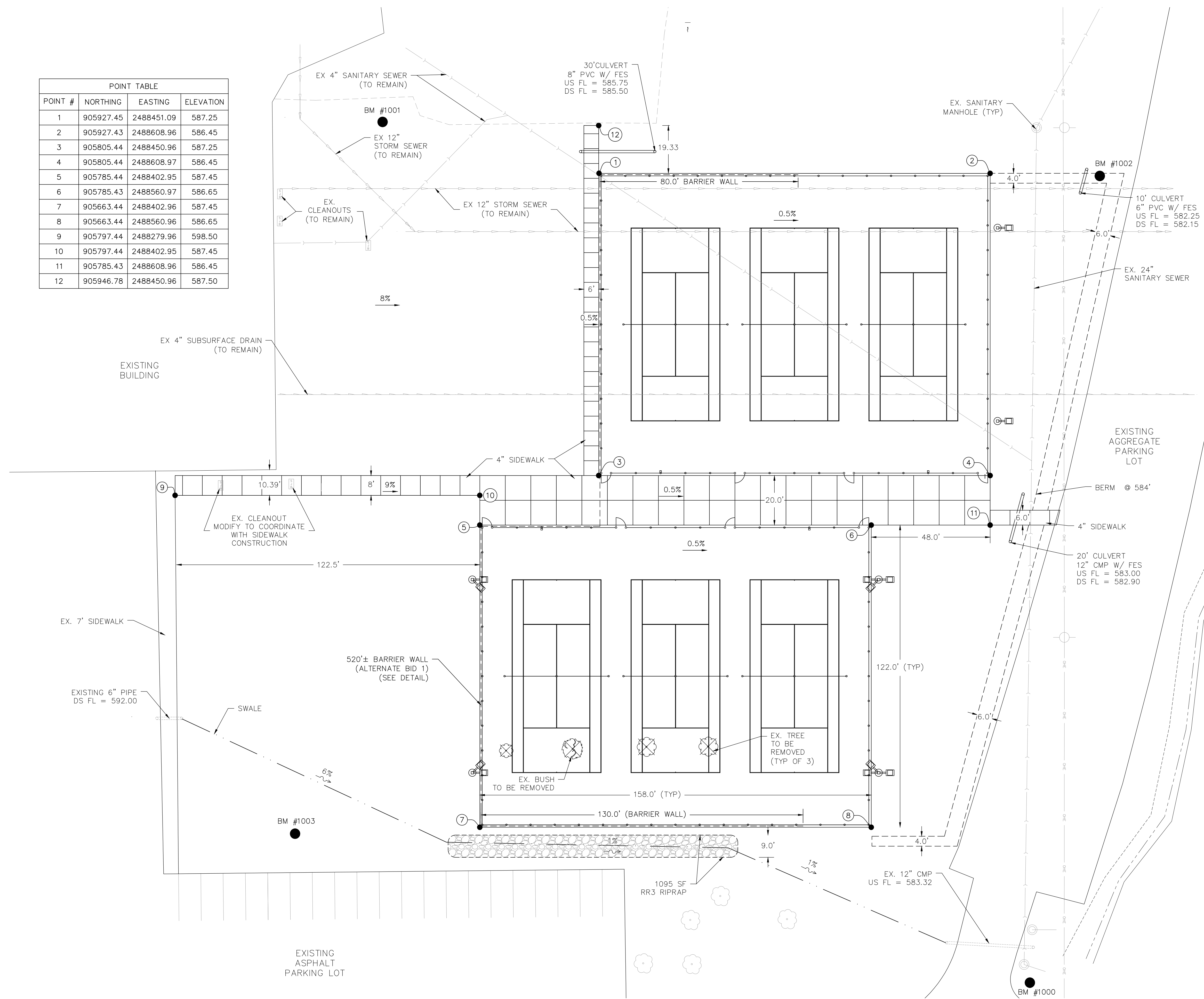
DATE: 4/7/2025

PROJECT NO: 150-0115

DESIGN: JG DRAWN: DH CHECK: JC

SITE PLAN

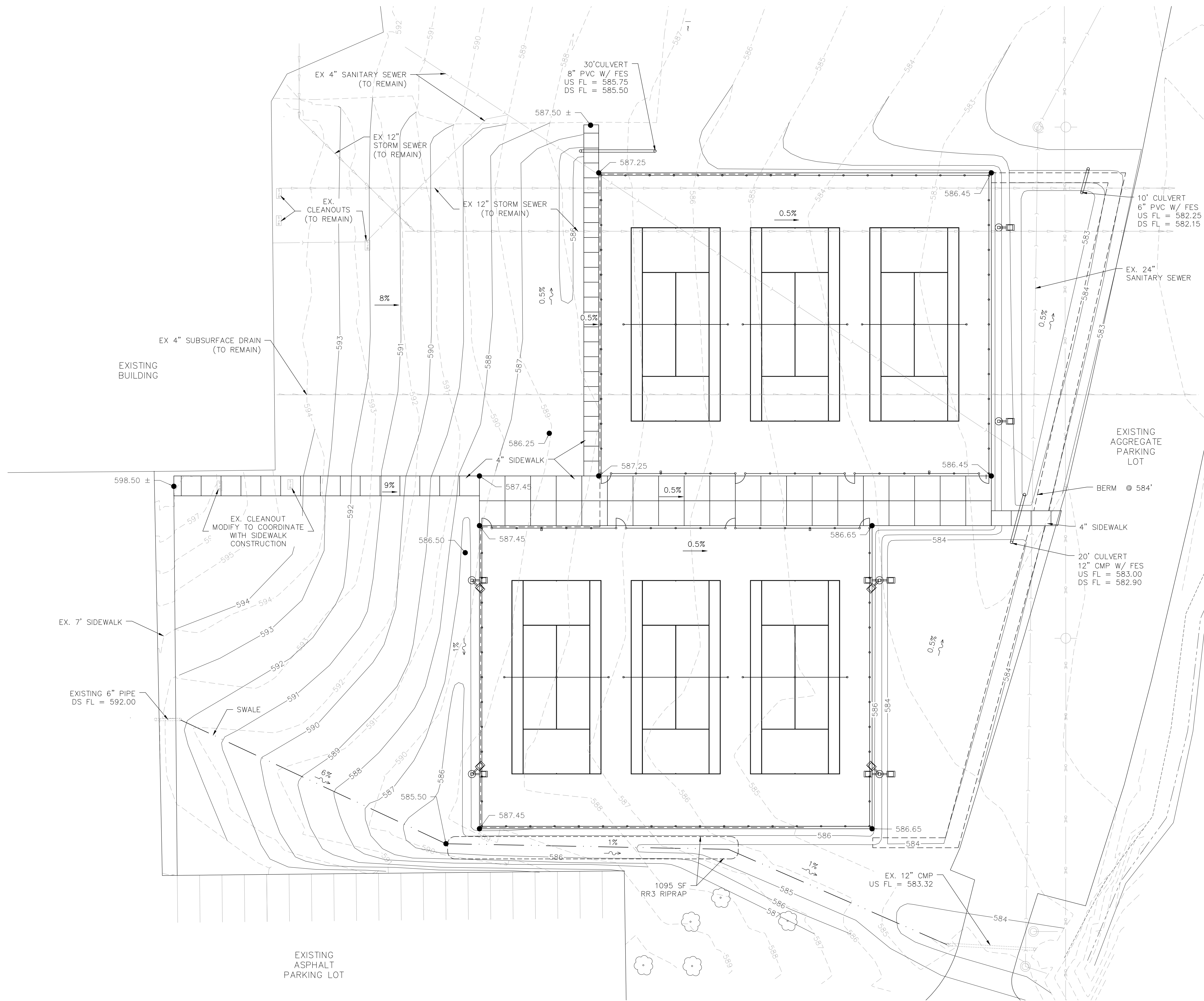
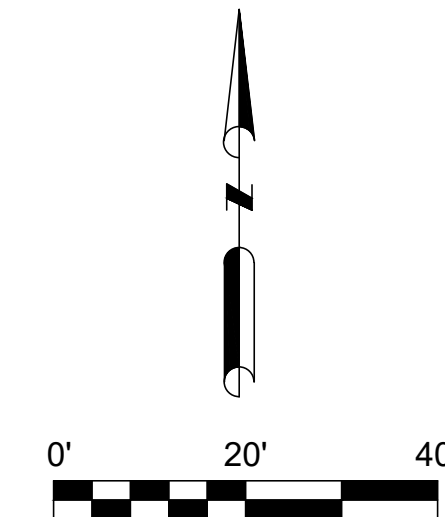
POINT #	NORTHING	EASTING	ELEVATION
1	905927.45	2488451.09	587.25
2	905927.43	2488608.96	586.45
3	905805.44	2488450.96	587.25
4	905805.44	2488608.97	586.45
5	905785.44	2488402.95	587.45
6	905785.43	2488560.97	586.65
7	905663.44	2488402.96	587.45
8	905663.44	2488560.96	586.65
9	905797.44	2488279.96	598.50
10	905797.44	2488402.95	587.45
11	905785.43	2488608.96	586.45
12	905946.78	2488450.96	587.50





Hurst-Rosche, Inc.
PROFESSIONAL DESIGN NUMBER: 184-000298

1400 E. TREMONT STREET
HILLSBORO, IL
PH: 217.532.3959
www.hurst-rosche.com
EAST ST. LOUIS, IL
MARION, IL
SPRINGFIELD, IL
ARNOLD, MO
NASHVILLE, TN



Justin L. Godwin
SIGNATURE

4/7/2025
DATE

11/30/2025
DATE

LICENSE EXPIRES

TENNIS COURT CONSTRUCTION
HILLSBORO JUNIOR HIGH SCHOOL
HILLSBORO CUSD No. 3
HILLSBORO, MONTGOMERY COUNTY, ILLINOIS

MK.	DATE	DESCRIPTION

DATE: 4/7/2025
PROJECT NO: 150-0115
DESIGN: JG DRAWN: DH CHECK: JC

GRADING PLAN

C-2



Hurst-Rosche, Inc.
PROFESSIONAL DESIGN NUMBER: 164-000296

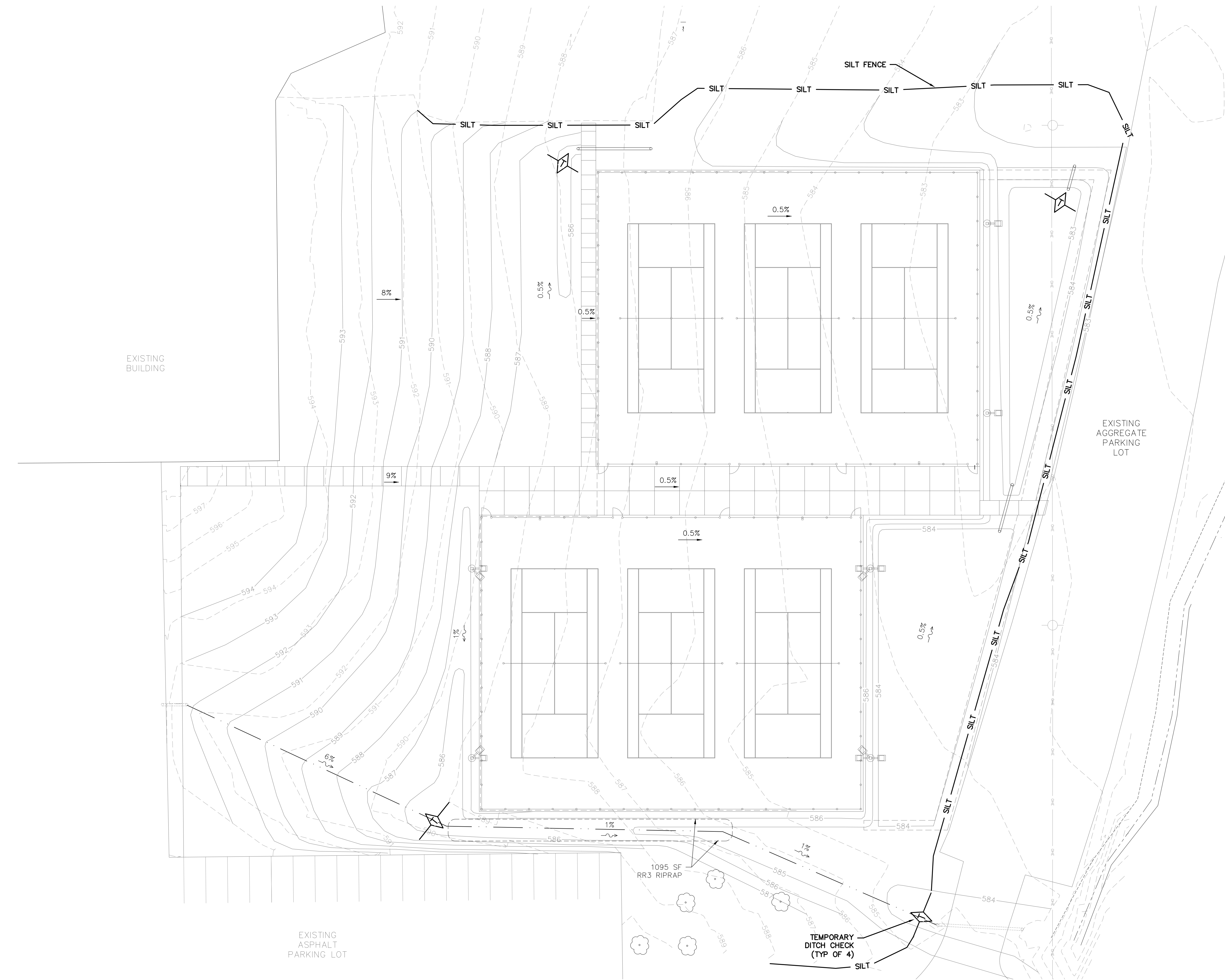
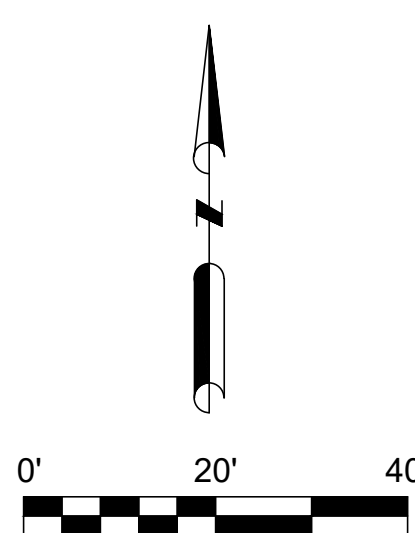
1400 E. TREMONT STREET
HILLSBORO, IL
PH: 217.532.3959
www.hurst-rosche.com
EAST ST. LOUIS, IL
MARION, IL
SPRINGFIELD, IL
ARNOLD, MO
NASHVILLE, TN



Justin L. Godwin
SIGNATURE

4/7/2025
DATE

11/30/2025
LICENSE EXPIRES



TENNIS COURT CONSTRUCTION
HILLSBORO JUNIOR HIGH SCHOOL
HILLSBORO CUSD No. 3
HILLSBORO, MONTGOMERY COUNTY, ILLINOIS

MK.	DATE	DESCRIPTION

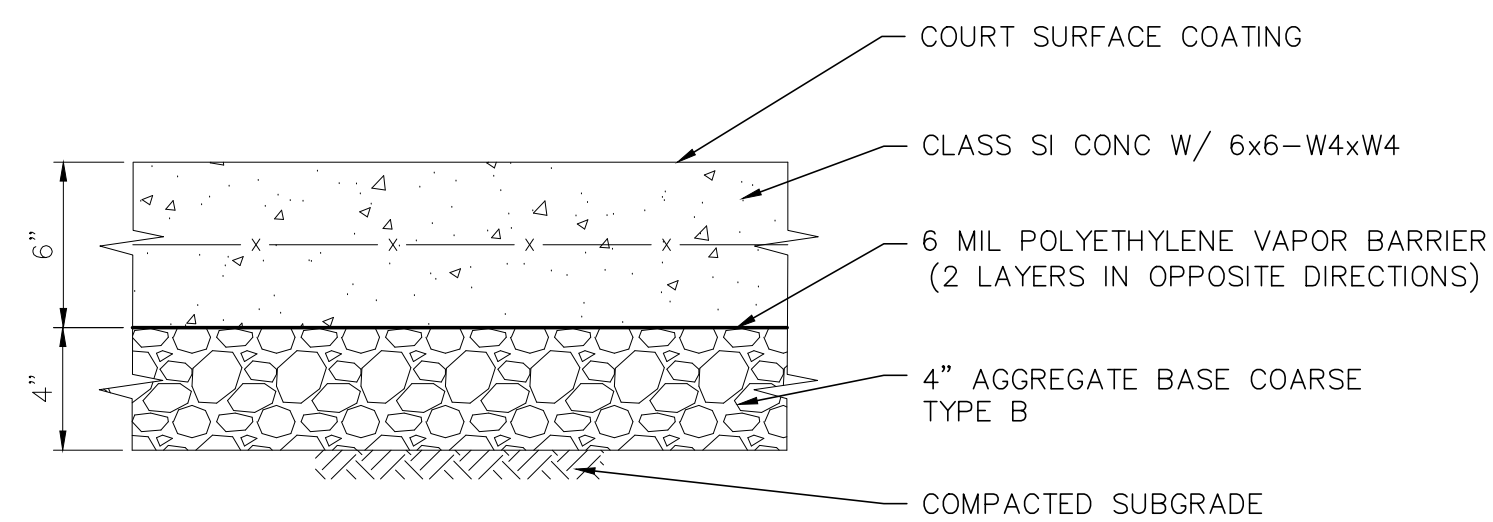
DATE: 4/7/2025
PROJECT NO: 150-0115
DESIGN: JG DRAWN: DH CHECK: JC

STORMWATER
POLLUTION
PREVENTION PLAN

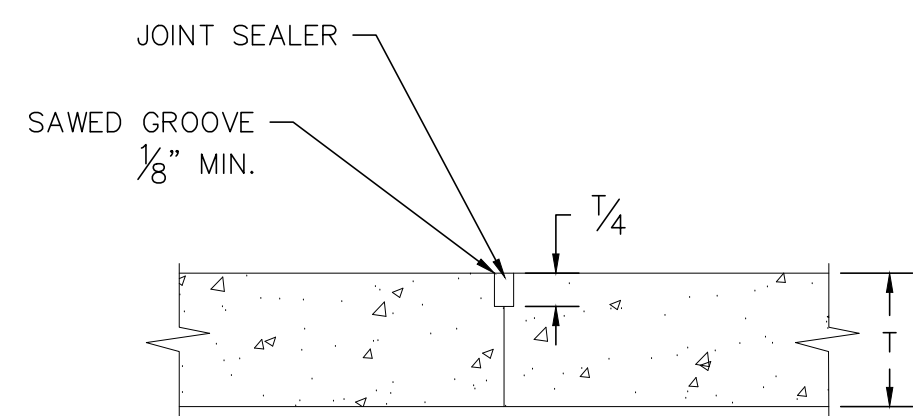
C-3

NOTES:

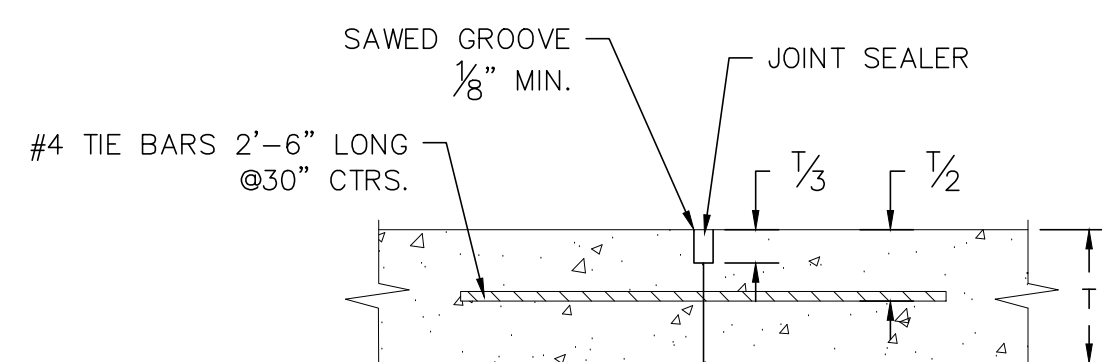
1. CURING COMPOUNDS SHALL NOT BE USED IN CONCRETE MIX
2. CONCRETE SHALL CURE FOR 28 DAYS PRIOR TO COURT SURFACE COATING PLACEMENT
3. FOLLOW COURT SURFACE MANUFACTURER'S INSTALLATION INSTRUCTIONS. SEE SPEC 32.18.23 FOR ADDITIONAL INFORMATION



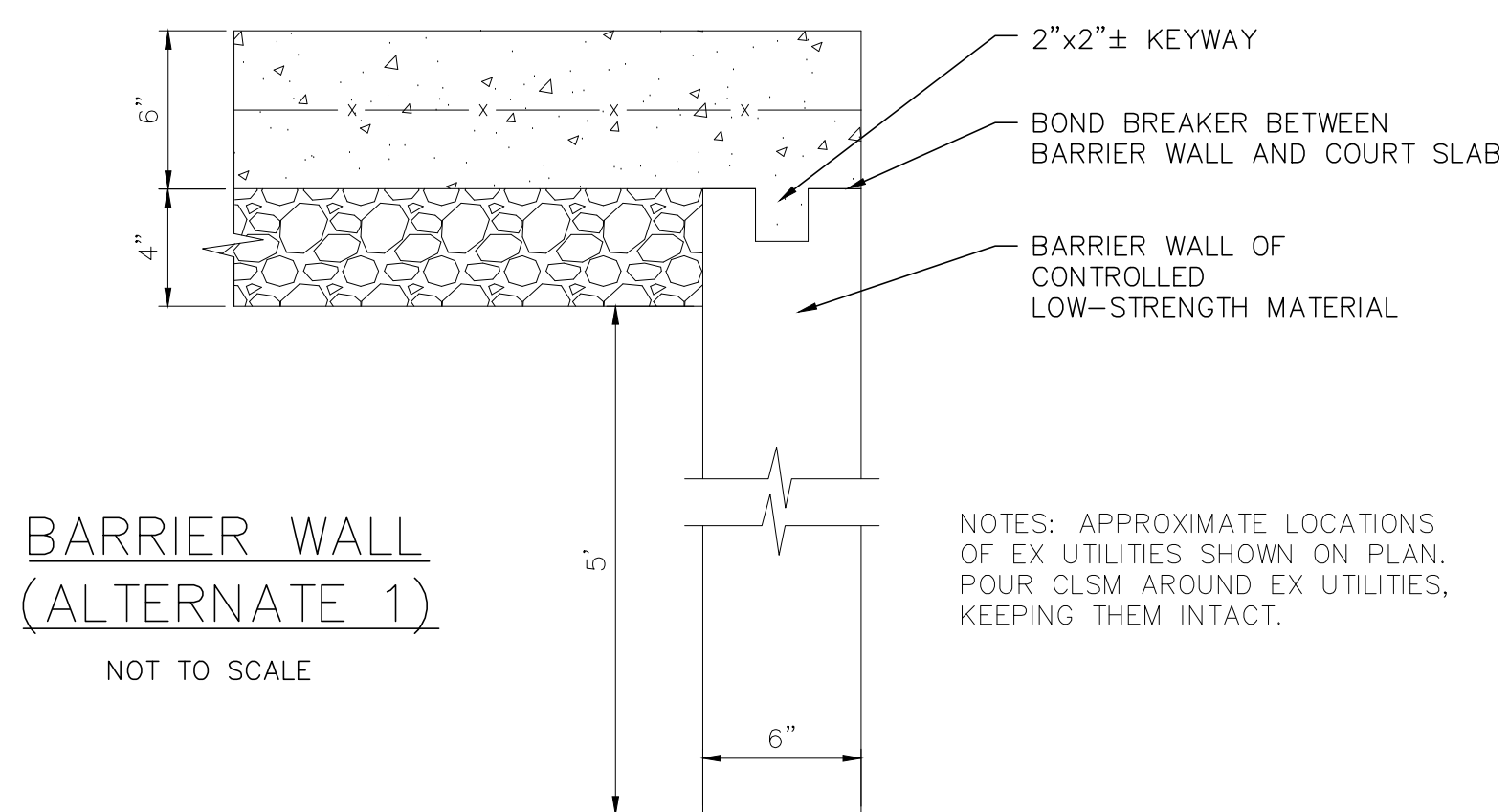
TENNIS COURT SECTION
NOT TO SCALE



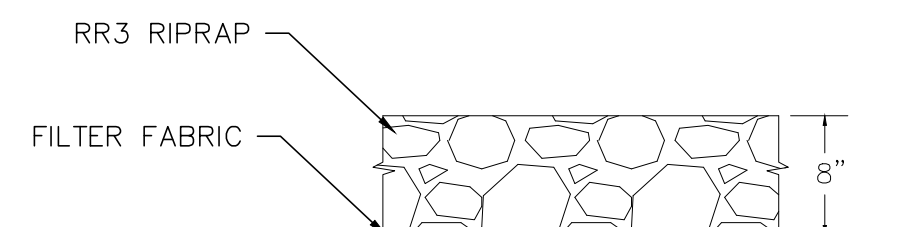
TYPE C
CONTROL JOINT
NOT TO SCALE



TYPE E
EXPANSION JOINT
NOT TO SCALE

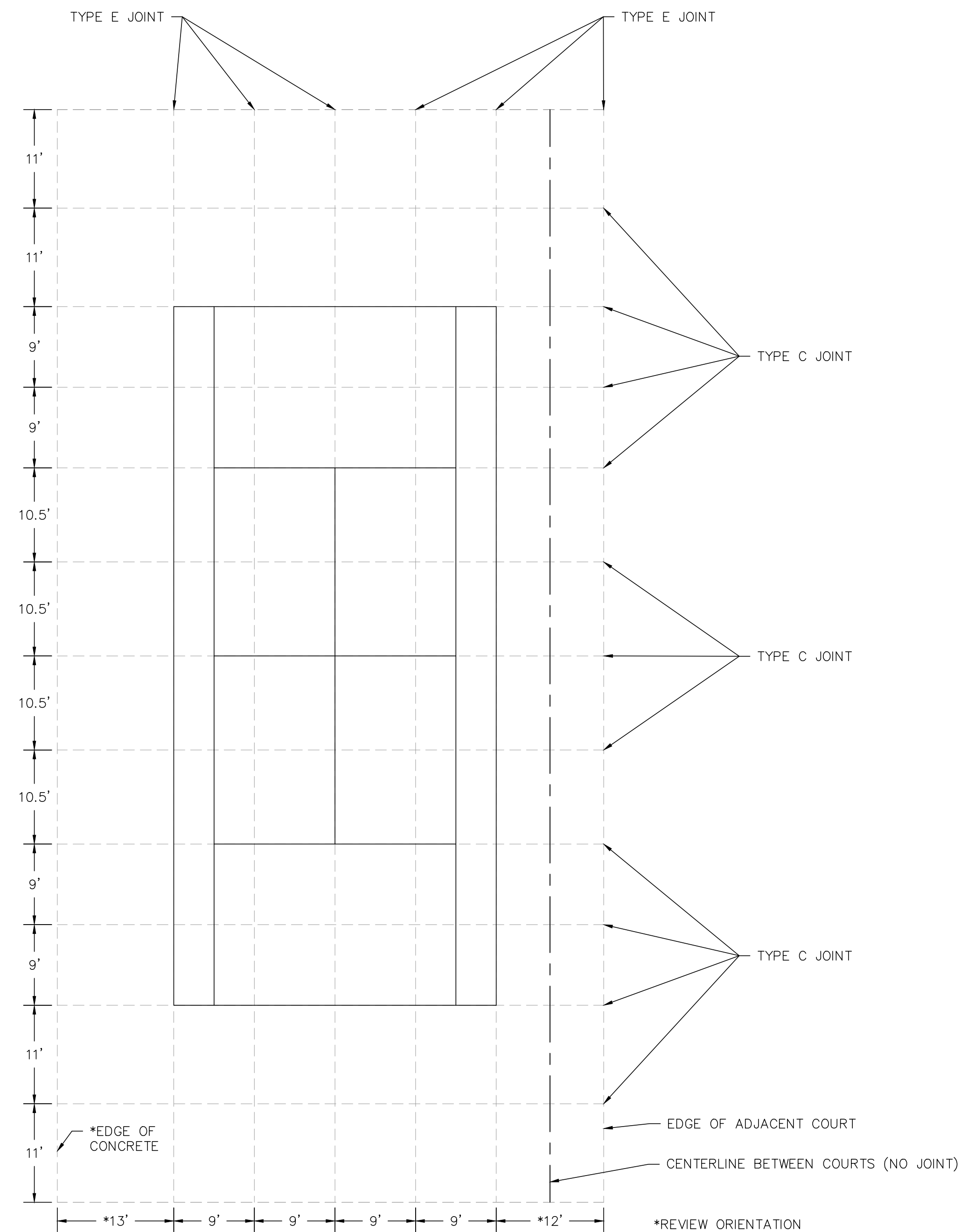


BARRIER WALL
(ALTERNATE 1)
NOT TO SCALE

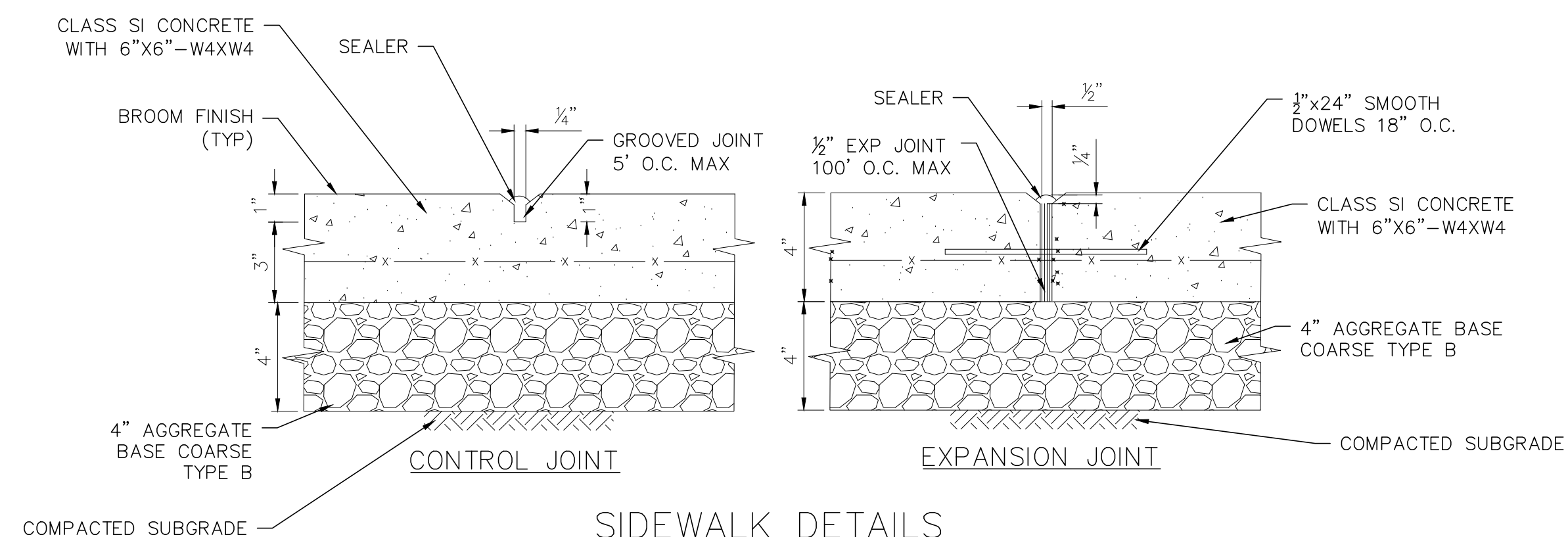


RR3 TYPICAL SECTION
NOT TO SCALE

NOTES: APPROXIMATE LOCATIONS OF EX UTILITIES SHOWN ON PLAN. POUR CLSM AROUND EX UTILITIES, KEEPING THEM INTACT.



TYPICAL TENNIS COURT PAVEMENT JOINT LAYOUT
(SW COURT SHOWN, OTHERS SIMILAR)
NOT TO SCALE



SIDEWALK DETAILS
NOT TO SCALE



Hurst-Rosche, Inc.
PROFESSIONAL DESIGN NUMBER: 184-000298

1400 E. TREMONT STREET
HILLSBORO, IL
PH: 217.532.3959
www.hurst-rosche.com
EAST ST. LOUIS, IL
MARION, IL
SPRINGFIELD, IL
ARNOLD, MO
NASHVILLE, TN



Justin L. Godwin
SIGNATURE

4/7/2025
DATE

11/30/2025
LICENSE EXPIRES

TENNIS COURT CONSTRUCTION
HILLSBORO JUNIOR HIGH SCHOOL
HILLSBORO CUSD No. 3
HILLSBORO, MONTGOMERY COUNTY, ILLINOIS

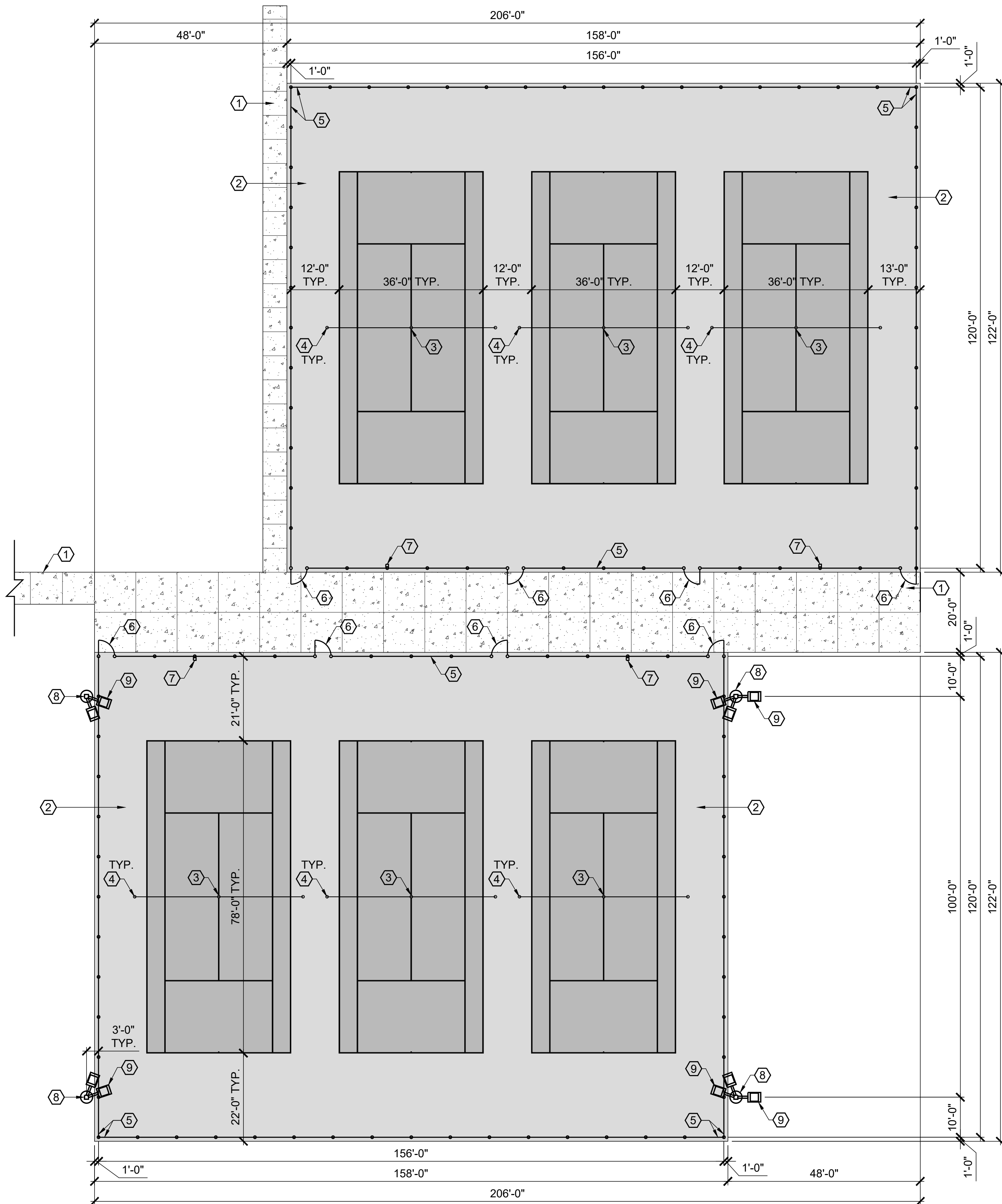
MK.	DATE	DESCRIPTION

DATE: 4/7/2025

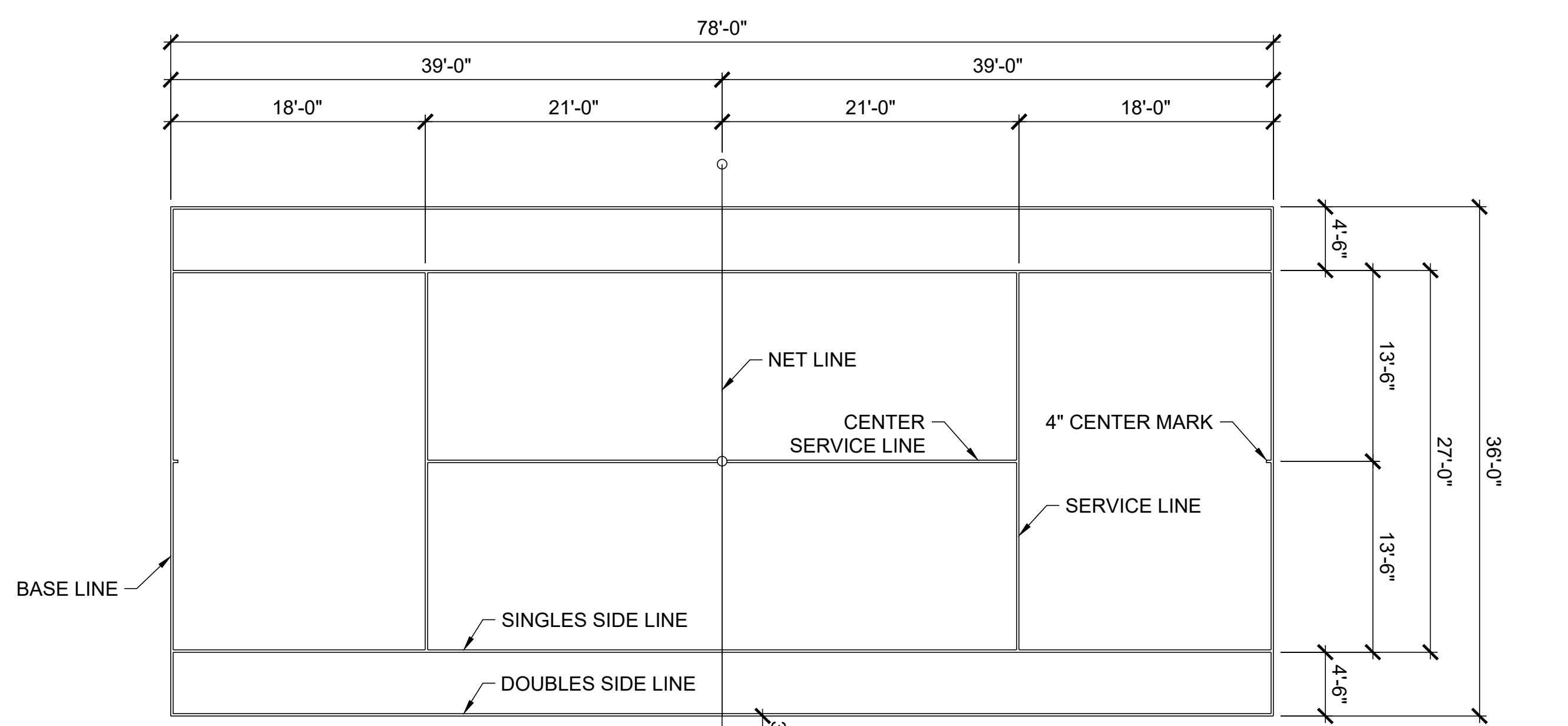
PROJECT NO: 150-0115

DESIGN: JG DRAWN: DH CHECK: JC

DETAILS



1
A-101
TENNIS COURT PLAN
SCALE: 1/16"=1'-0"



2
A-101
STRIPING LAYOUT
SCALE: 1/8"=1'-0"

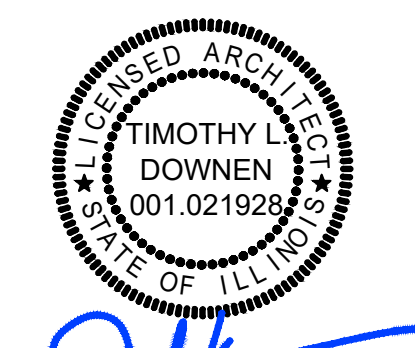
- NOTES:**
- ALL DIMENSIONS ARE TO THE OUTSIDE EDGE OF THE PLAYING LINES, WITH THE EXCEPTION OF THE CENTER LINES WHICH ARE MEASURED OUT TO CENTER.
 - THE CENTER SERVICE LINE AND CENTER MARKS SHALL BE 2" WIDE. OTHER LINES SHALL BE BETWEEN 1" AND 2" WIDE, EXCEPT THE BASE LINES MAY BE UP TO 4" WIDE.
 - LAYOUTS SHALL MEET ALL REQUIREMENTS OF ILLINOIS HIGH SCHOOL ATHLETIC ASSOCIATION (IHSA) AND NATIONAL FEDERATION OF STATE HIGH SCHOOL ASSOCIATIONS (NFHS).

- KEYED NOTES:** #
- CONCRETE SIDEWALK - SEE C-SHEETS.
 - TENNIS COURT SURFACING OVER CONCRETE PAVEMENT. 3 COLORS TO BE USED FOR COURTS, COURT LINES, AND AREAS BETWEEN AND AROUND COURTS.
 - NET HOLD-DOWN - SEE DETAIL 1/A-501.
 - NET POST FOUNDATION - SEE DETAIL 2/A-501.
 - 12' HIGH BLACK VINYL COATED CHAIN LINK FENCE ASSEMBLY - SEE DETAIL 3/A-501.
 - 4' WIDE BLACK VINYL COATED CHAIN LINK FENCE GATE. MINIMUM 7'-0" TALL WITH CONTINUOUS GATE FABRIC OVER TOP OF GATE.
 - ELECTRICAL OUTLETS - SEE E-SHEETS.
 - CAST-IN-PLACE CONCRETE LIGHT POLE BASE - SEE E-SHEETS.
 - ATHLETIC FIELD LIGHTING AND POST - SEE E-SHEETS FOR THESE FIXTURES AS WELL AS OTHER BASE BID AND ALTERNATE BID FIXTURES / POSTS / FOUNDATIONS.



Hurst-Rosche, Inc.
PROFESSIONAL DESIGN NUMBER: 184-002268
1400 E. TREMONT STREET
HILLSBORO, IL
PH: 217.532.3959

www.hurst-rosche.com
EAST ST. LOUIS, IL
MARION, IL
ARNOLD, MO
SPRINGFIELD, IL
NASHVILLE, TN



SIGNATURE: [Signature]
DATE: 04-07-2025
DATE: 11-30-2026
LICENSE EXPIRES

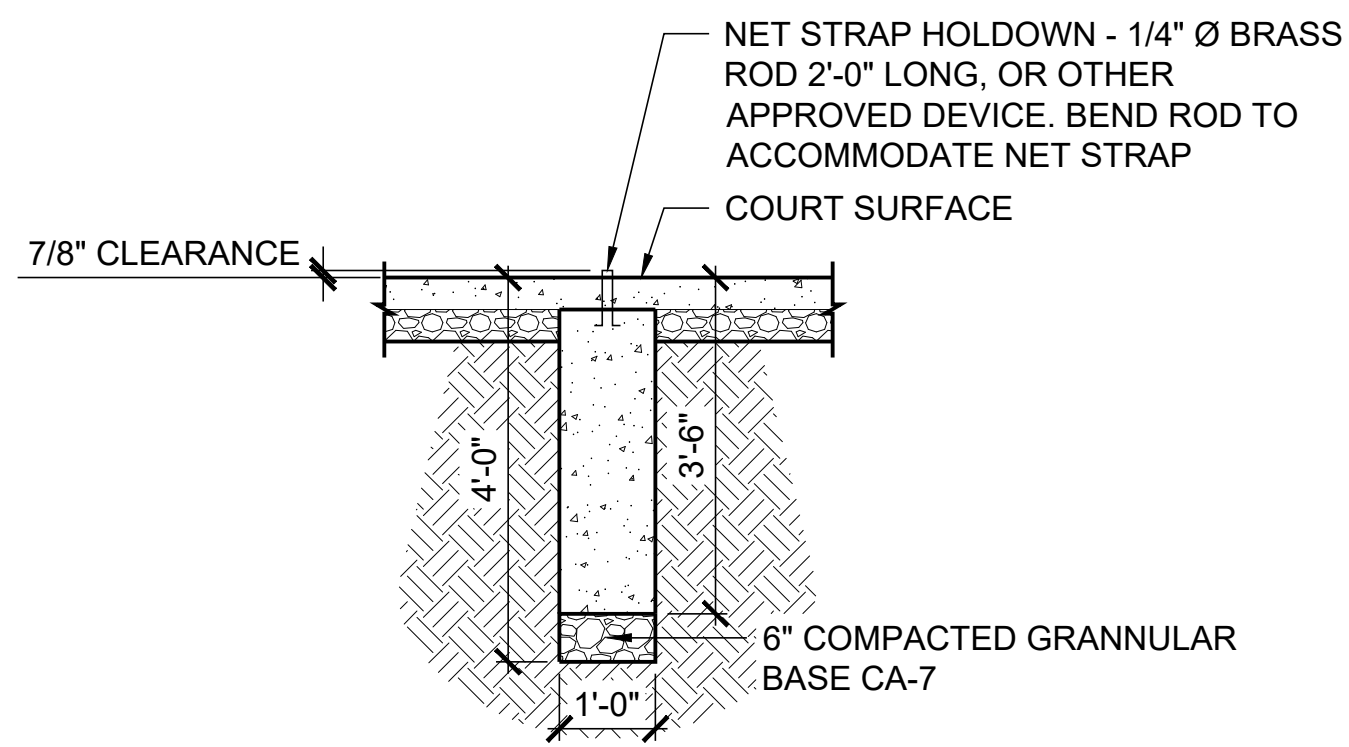
WRFT
ENGINEERS, LLC
112 N. KANSAS STREET
EDWARDSVILLE, IL 62025
P: 618-659-8709
P: 618-656-8353

TENNIS COURT CONSTRUCTION
HILLSBORO JUNIOR HIGH SCHOOL
HILLSBORO CUSD No. 3
HILLSBORO, MONTGOMERY COUNTY, ILLINOIS

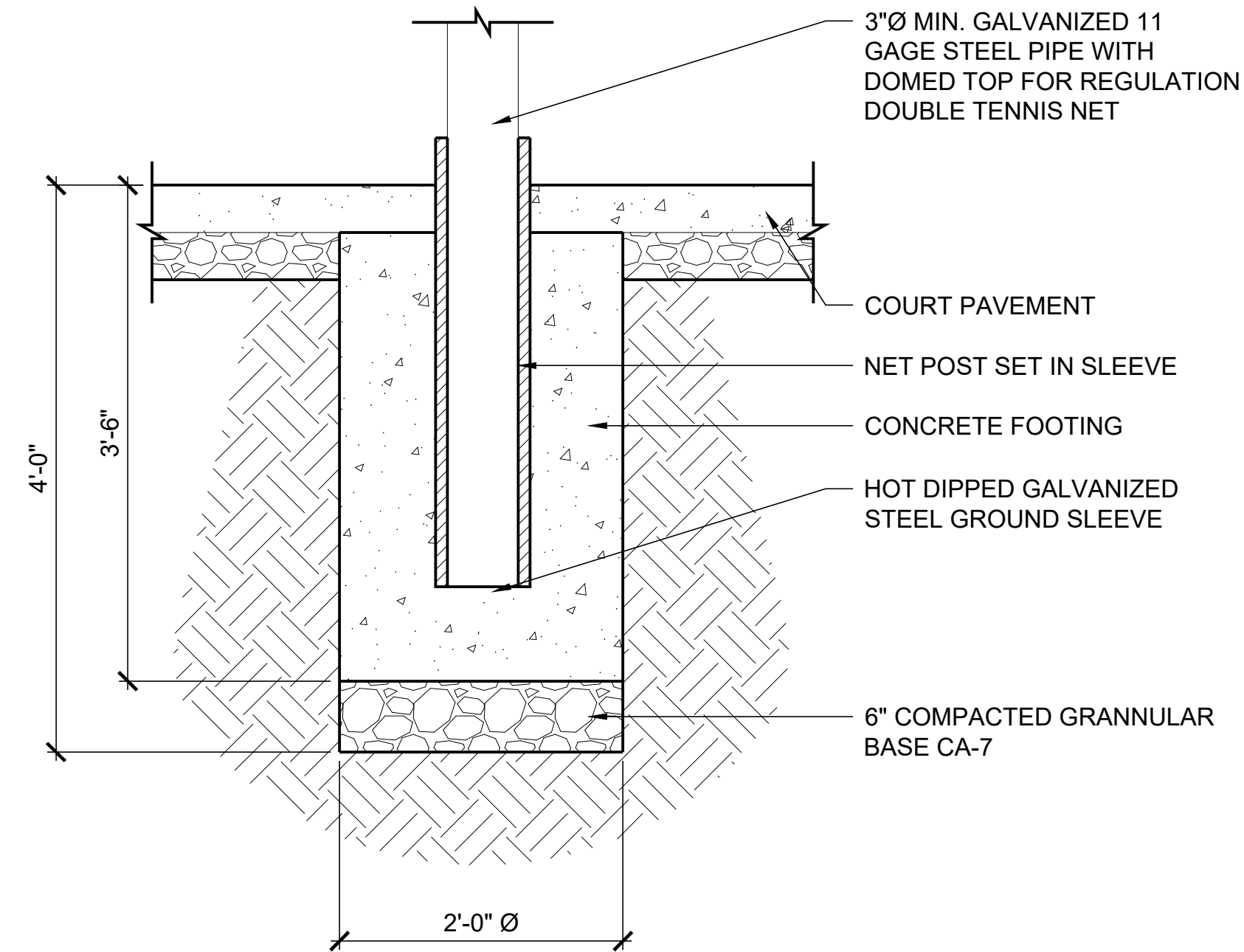
MK.	DATE	DESCRIPTION

DATE: 04-07-2025
PROJECT NO: 150-0015
DESIGN: TLD DRAWN: BJV CHECK: TLD

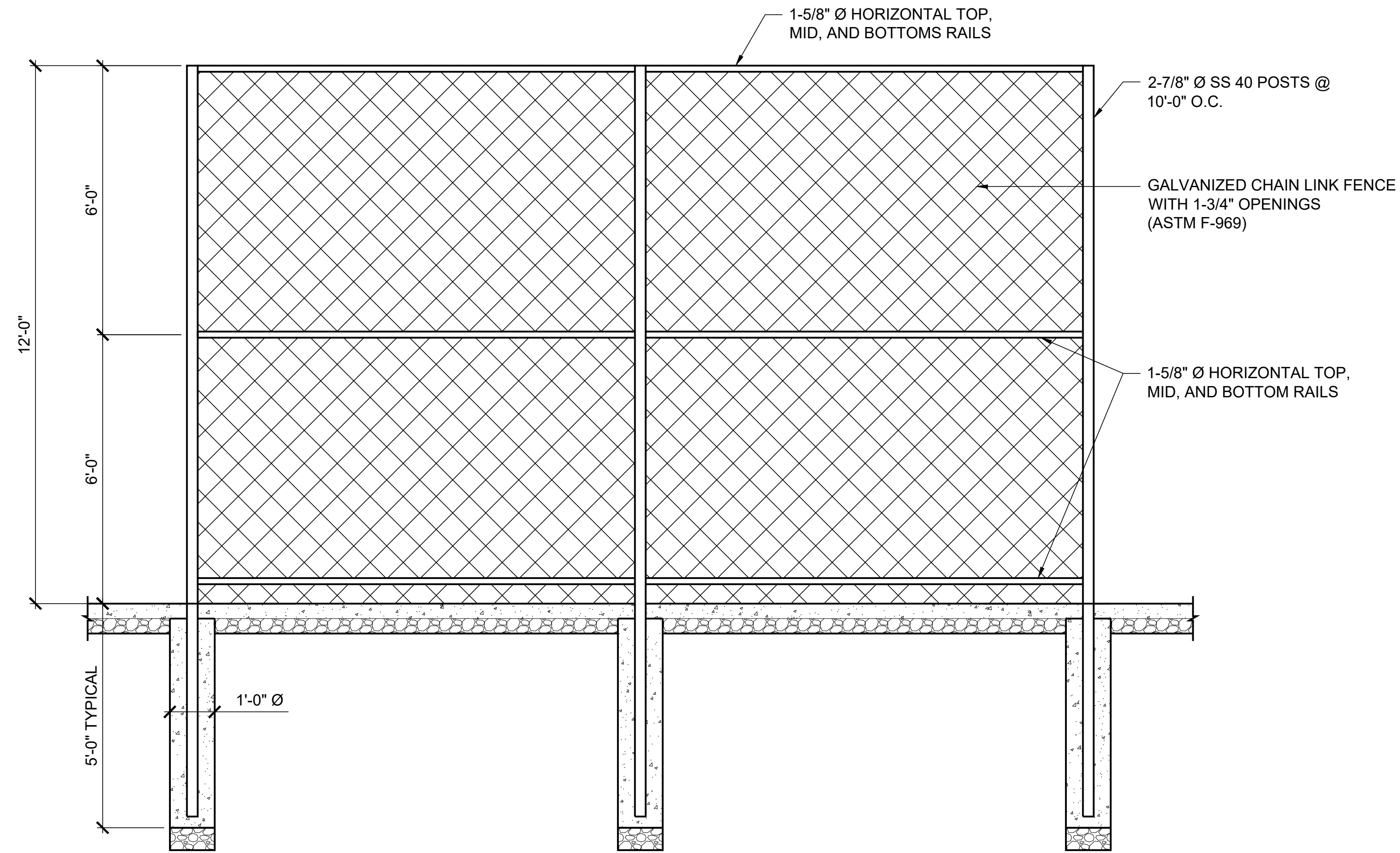
TENNIS COURT PLAN AND STRIPING LAYOUT



1 NET HOLD-DOWN FOOTER DETAIL
SCALE: 1/2"=1'-0"



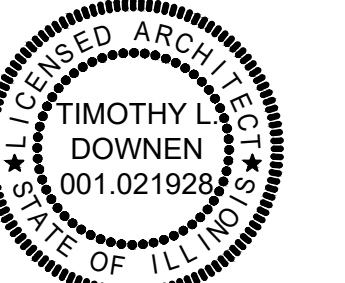
2 NET POST FOUNDATION DETAIL
SCALE: 1"=1'-0"



3 12' HIGH CHAIN LINK TENNIS FENCE DETAIL
SCALE: 1/2"=1'-0"



Hurst-Rosche, Inc.
PROFESSIONAL DESIGN NUMBER: 184-000298
1400 E. TREMONT STREET
HILLSBORO, IL
PH: 217.532.3959
www.hurst-rosche.com
EAST ST. LOUIS, IL
MARION, IL
ARNOLD, MO
SPRINGFIELD, IL
NASHVILLE, TN



SIGNATURE: *[Signature]*
DATE: 04-07-2025
DATE: 11-30-2026
LICENSE EXPIRES



WRFT ENGINEERS, LLC
112 N. KANSAS STREET
EDWARDSVILLE, IL 62025
P: 618-659-8709
P: 618-656-8353

TENNIS COURT CONSTRUCTION
HILLSBORO JUNIOR HIGH SCHOOL
HILLSBORO CUSD No. 3
HILLSBORO, MONTGOMERY COUNTY, ILLINOIS

MK.	DATE	DESCRIPTION

DATE: 04-07-2025
PROJECT NO: 150-0015
DESIGN: TLD DRAWN: BJV CHECK: TLD

TENNIS COURT
DETAILS

A-501

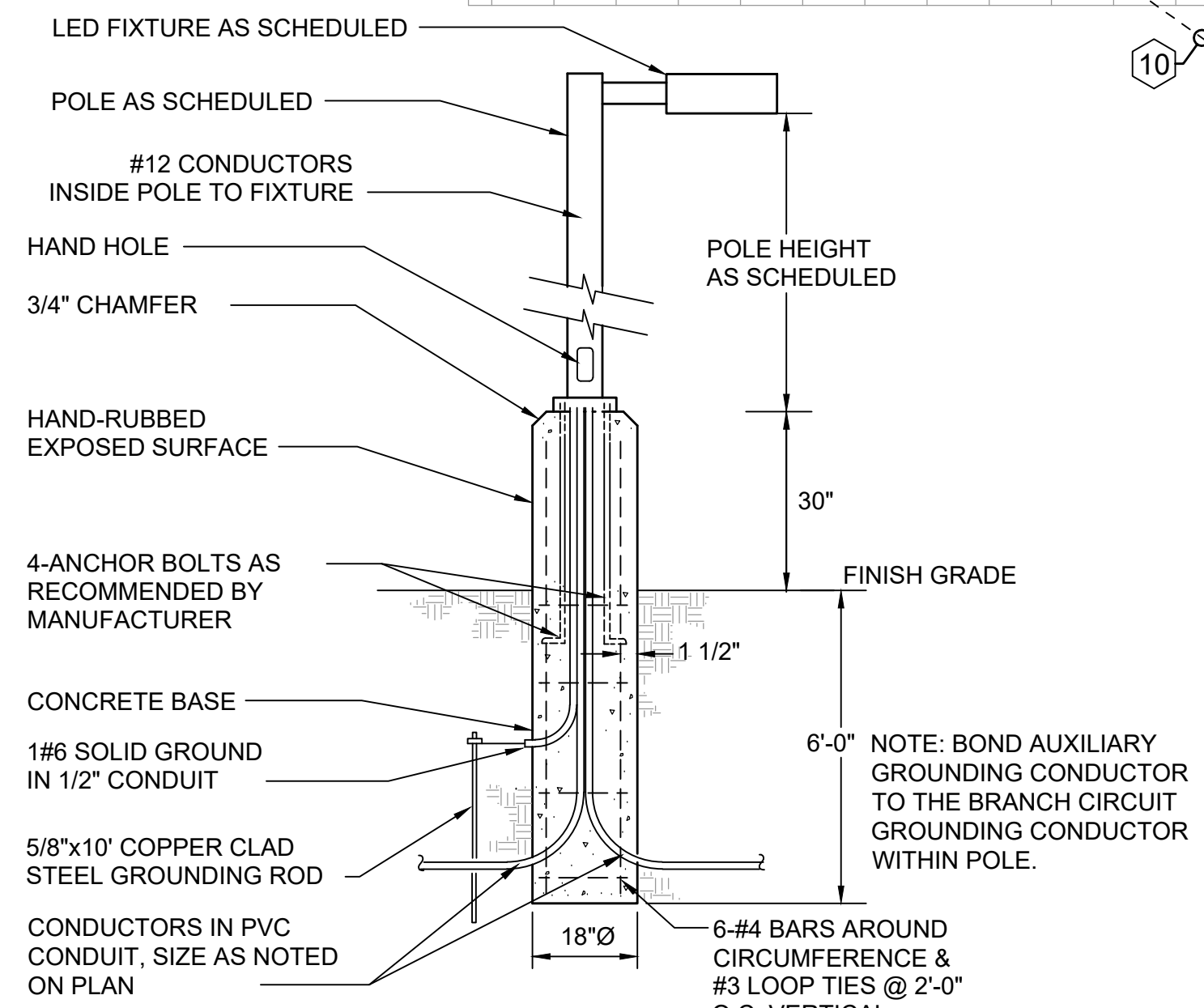
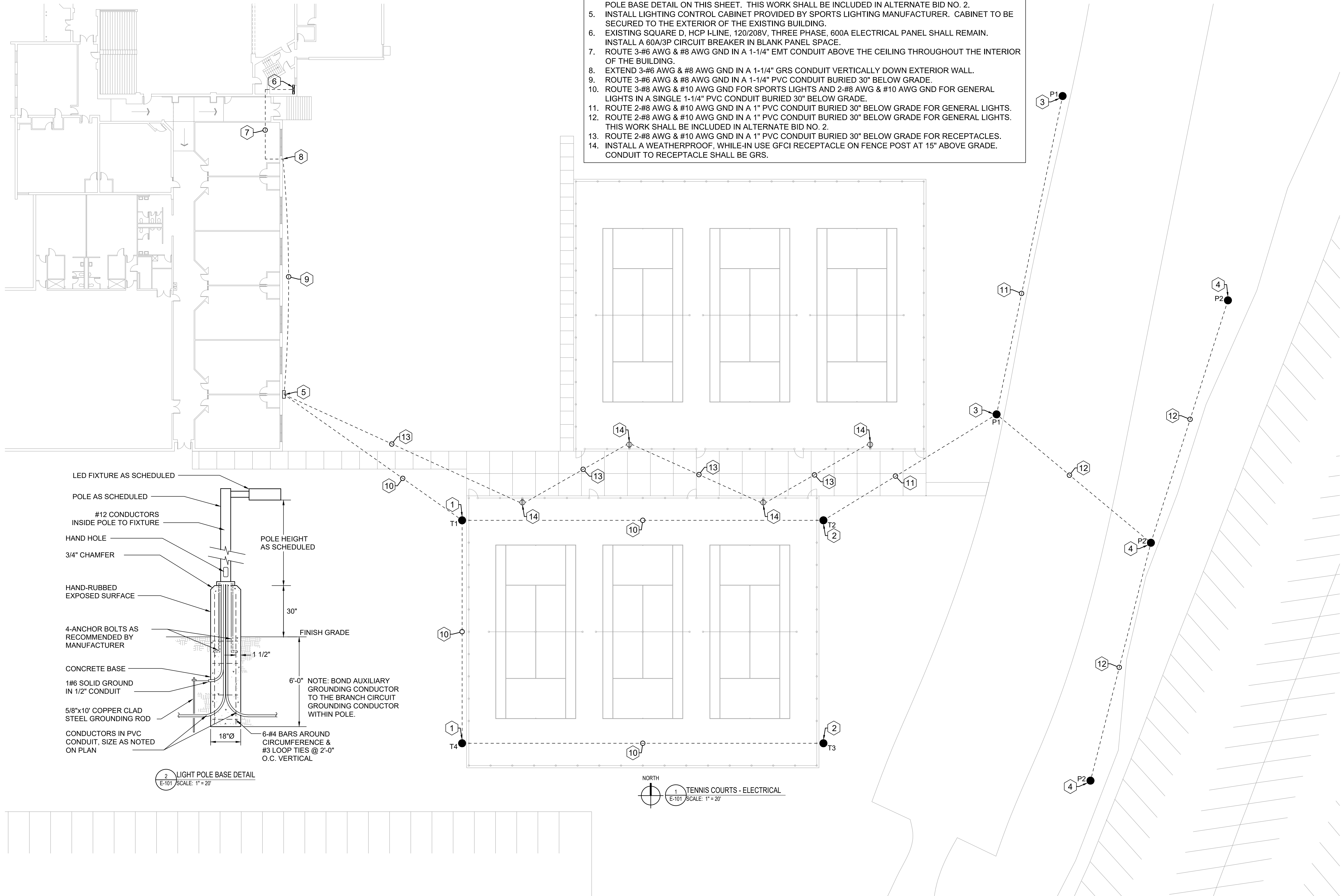
LIGHTING SCHEDULE					
TAG	MANUF.	CAT. NO.	VOLT	WATTS	DESCRIPTION
P1	ZUMA	VIC-300-HE-UNV-4K-T4-C1-SF-BK-SPD10KV PS-30-5R-7G-BC1134-TN238-BK-VD	120	300	43,000 LUMEN LED LIGHT FIXTURE WITH TYPE 4 OPTICS ON A 30 FOOT STEEL POLE.
P2	ZUMA	VIC-300-HE-UNV-4K-T3-C1-SF-BK-SPD10KV PS-30-5R-7G-BC1134-TN238-BK-VD	120	300	43,000 LUMEN LED LIGHT FIXTURE WITH TYPE 3 OPTICS ON A 30 FOOT STEEL POLE.

ELECTRICAL KEYED (X) NOTES:

1. INSTALL NEW LIGHT POLE/FIXTURES IN ACCORDANCE WITH SPECIFICATION SECTION 26 56 00. THIS POLE SHALL HAVE (2) FIXTURES FOR THE TENNIS COURTS.
2. INSTALL NEW LIGHT POLE/FIXTURES IN ACCORDANCE WITH SPECIFICATION SECTION 26 56 00. THIS POLE SHALL HAVE (2) FIXTURES FOR THE TENNIS COURTS AND (1) FIXTURE FACING EAST FOR THE PARKING LOT.
3. INSTALL NEW LIGHT POLE/FIXTURE TYPE "P1" AS INDICATED ON THE LIGHTING SCHEDULE. SEE THE LIGHT POLE BASE DETAIL ON THIS SHEET.
4. INSTALL NEW LIGHT POLE/FIXTURE TYPE "P2" AS INDICATED ON THE LIGHTING SCHEDULE. SEE THE LIGHT POLE BASE DETAIL ON THIS SHEET. THIS WORK SHALL BE INCLUDED IN ALTERNATE BID NO. 2.
5. INSTALL LIGHTING CONTROL CABINET PROVIDED BY SPORTS LIGHTING MANUFACTURER. CABINET TO BE SECURED TO THE EXTERIOR OF THE EXISTING BUILDING.
6. EXISTING SQUARE D, HCP I-LINE, 120/208V, THREE PHASE, 600A ELECTRICAL PANEL SHALL REMAIN. INSTALL A 60A/3P CIRCUIT BREAKER IN BLANK PANEL SPACE.
7. ROUTE 3-#6 AWG & #8 AWG GND IN A 1-1/4" EMT CONDUIT ABOVE THE CEILING THROUGHOUT THE INTERIOR OF THE BUILDING.
8. EXTEND 3-#6 AWG & #8 AWG GND IN A 1-1/4" GRS CONDUIT VERTICALLY DOWN EXTERIOR WALL.
9. ROUTE 3-#6 AWG & #8 AWG GND IN A 1-1/4" PVC CONDUIT BURIED 30" BELOW GRADE.
10. ROUTE 3-#8 AWG & #10 AWG GND FOR SPORTS LIGHTS AND 2-#8 AWG & #10 AWG GND FOR GENERAL LIGHTS IN A SINGLE 1-1/4" PVC CONDUIT BURIED 30" BELOW GRADE.
11. ROUTE 2-#8 AWG & #10 AWG GND IN A 1" PVC CONDUIT BURIED 30" BELOW GRADE FOR GENERAL LIGHTS. THIS WORK SHALL BE INCLUDED IN ALTERNATE BID NO. 2.
12. ROUTE 2-#8 AWG & #10 AWG GND IN A 1" PVC CONDUIT BURIED 30" BELOW GRADE FOR RECEPTACLES. THIS WORK SHALL BE INCLUDED IN ALTERNATE BID NO. 2.
13. ROUTE 2-#8 AWG & #10 AWG GND IN A 1" PVC CONDUIT BURIED 30" BELOW GRADE FOR RECEPTACLES. CONDUIT TO RECEPTACLE SHALL BE GRS.
14. INSTALL A WEATHERPROOF, WHILE-IN USE GFCI RECEPTACLE ON FENCE POST AT 15" ABOVE GRADE.

ELECTRICAL GENERAL NOTES:

1. PERFORM ALL WORK IN STRICT ACCORDANCE WITH THE 2020 EDITION OF THE NATIONAL ELECTRIC CODE.
2. RESTORE ALL SURFACES TO ORIGINAL CONDITION UPON COMPLETION OF UNDERGROUND WORK.



2 LIGHT POLE BASE DETAIL
E-101 SCALE: 1" = 20'

1 TENNIS COURTS - ELECTRICAL
E-101 SCALE: 1" = 20'

HR
Hurst-Rosche, Inc.
PROFESSIONAL DESIGN NUMBER: 184-000298
1400 E. TREMONT STREET
HILLSBORO, IL
PH: 217.532.3959
www.hurst-rosche.com
SPRINGFIELD, IL
EAST ST. LOUIS, IL
MARION, IL
NASHVILLE, TN
ARNOLD, MO

MARY A. RITNER
062-057600
LICENSED PROFESSIONAL ENGINEER
M.A. Ritner

SIGNATURE 04-07-2025
DATE 11-30-2025
LICENSE EXPIRES

R25-010
WRFT
ENGINEERS, LLC
112 N. KANSAS STREET
EDWARDSVILLE, IL 62025
P: 618.659.8709
F: 618.656.8353

TENNIS COURT CONSTRUCTION
HILLSBORO JUNIOR HIGH SCHOOL
HILLSBORO CUSD No. 3
HILLSBORO, MONTGOMERY COUNTY, ILLINOIS

MK.	DATE	DESCRIPTION

DATE: 04-07-2025
PROJECT NO: 150-0015
DESIGN: DRAWN: CHECK:

TENNIS COURT
ELECTRICAL
PLAN